



Relative Thoughts

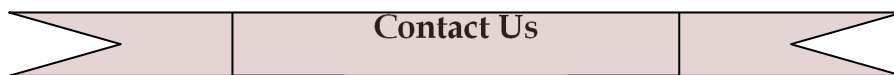
Volume 21 No. 3

July 2017

**Quarterly Journal of the
Fleurieu Peninsula Family History Group Inc.**



Holy Trinity Church, North Terrace, Adelaide. This is Adelaide's pioneer church. Its original foundation stone was laid by Governor Hindmarsh on 26 January 1838.



Contact Us

Fleurieu Peninsula Family History Group Inc.

Fleurieu Peninsula Family History Group Inc.

The Secretary

PO Box 1078

Christies Beach North

South Australia 5165

Email – fleurpengroupinc@yahoo.com.au

Website – <http://fleurieufamilyhistory.org>

President – Joy Nieass

Vice President – Peter Tuck

Secretary/Volunteers/Raffles –
Mary Sedgmen

Treasurer – Lynette Gibson

Journal Editor – Christine Keen

Webmaster – Graham Redman

Committee Member –
Gay Jennings

Membership Coordinator –
Nola Clisby

Committee Member –
Neville Hudson

Speaker Coordinator –
Elizabeth Grocke

Patron – Graham Jaunay

Non Committee

Research Coordinator Email

Resource Room Bookings

Rootsweb mailing list – members
only Ros Dunstall

INDEX

<i>Inside Front Cover</i> – Contact details and Committee listings	2
President's Report – Joy Nieass	4–7
Milang Lakeside Butter Factory – Christine Keen	7–8
Memories – Ann van der Linden	8–9
Coming to Grips with my DNA – Graham Jaunay	10–15
Advance Reminder – Membership Fees	15
Introducing Tina Jenkins – Kerry Edwards	16–19
Look What You Missed!! – Elizabeth Grocke	20
A Quizzical Quest	21
Welcome to New Members	21
Work Books – Anne Dow & Lynn Dillon	22
2017 Seminar Flyer – Elizabeth Grocke	23
Upcoming Speakers & Events; Resource Room opening times	24
A Quizzical Quest Answers; Evening Computer Group	25
Books for Sale	26
Not Just a Holiday – Lynette Gibson	27–28
Family History Books – Kerry Edwards	28–29
Volunteer Research; Editor's Note; When & Where	30–31



FPFHG Facebook Group

View of Witton Bluff on Facebook and websites



PRESIDENT'S REPORT



I welcome you to the latest edition of *Relative Thoughts*. As we now all know we are into winter and the cooler temperatures are here for awhile. I do hope you are all staying warm indoors and researching your family or deciphering your DNA results.

The activities we organised for History Month were successful. The opening of the Resource Room had five visitors.

One couple, who visited were touring South Australia from Western Australia were helped by FPFHG members to find information of family members on the Fleurieu. We also had three other casual visitors. The May general meeting was well attended where we welcomed five visitors. One new member joined us: welcome to Margaret Tickle. Thank you to all who made all visitors welcome.

Once again our speaker co-ordinator Elizabeth organised 3 interesting speakers for us.

- April meeting was Joanna Day from the State Library of SA who spoke of the Red Cross letters which are now accessible via the internet—there were many stories from families and survivors which were very moving.
- May meeting speaker was Mark Randell who shared his family history, their involvement in the establishment of the colony and the flour milling industry which still operates today.
- June meeting was David Wilson from the Kangaroo Island History Pioneers Association who spoke to us of the descendants from the first six ships to South Australia.

April also saw us remembering the fallen at various ANZAC ceremonies held around the State. This is a very special time for many families with memories starting with the Boer War, through to World War I and II, Korea, New Guinea and other times and places to current personnel serving in Iraq and other peace keeping forces.

May was a time when many celebrated Mother's Day—this is a time to reflect on not only our Mothers, Grandmothers but the many women who also served or are currently serving in the Armed Services, the Land Armies and managed to

keep 'the home fires burning' while the menfolk served overseas or were involved in other community commitments necessary to keep families and communities together until they returned.

I have recently been undertaking research for a family member and am hoping to establish his family roots which are in the south-east. This research took me to an orphanage run by an amazing Scottish lady, Christina Smith. In 1866 with funding from Lady Burdett-Coutts provided through Bishop Short of the Anglican Church, Mrs Smith achieved her long-held dream of establishing a school and home for local Aboriginal children in Mount Gambier. Her pupils learned prayers, hymns and completed religious exercises based on Scripture. Proof of her claim that Aborigines were not 'too low intellectually or morally to be either Christianised or civilised', students left her school literate and prepared for service locally. Due to an epidemic and loss of support, however, only four students remained in 1867 and the school closed in 1868 to become a home for Aborigines. (So far, with many attempts to locate Ellen (my cousin's great grandmother) I have learnt more of Mrs. Smith and her work with Aboriginal children and their families.)

At the same time as Christina Smith was working with Aboriginal children in Mount Gambier, a few miles north Mary McKillop opened her first school in 1866 in a disused stable in Penola for underprivileged children. This was the first Saint Joseph's School. Next to St Xavier Cathedral in the Mary McKillop Plaza there is a bronze statue which shows her holding hands with a girl on one side and an Aboriginal boy on the other. She also was interested in the welfare of Aboriginal children. We all know the story of Mary McKillop who has now become Saint Mary McKillop.

There are also currently groups which continue to support the 'women on the land' -

The Women in Agriculture and Business of SA Inc.

"Women in Agriculture and Business of SA Inc. is a state-wide support and communication network for rural women, especially those interested or involved in primary industries. WAB, as it is often known has a network of branches with about 300 members. Branches usually meet monthly to work for local community projects, to discuss wider issues or perhaps to conduct or attend workshops of an educational or cultural nature. Friendship is a big part of WAB meetings. WAB was formed at Riverton in 1917 to meet the needs of women who were isolated, and who

were working with their families to establish farms and homes in rural districts. From those early days, WAB has had close links with the Agricultural Bureau and various government Agriculture agencies.

Today, WAB has a formal affiliation with the Agricultural Bureau and is represented on the Advisory Board of Agriculture. WAB is also affiliated with *Associated Country Women of the World* which has links with the United Nations. It is also affiliated with the *National Council of Women*."

<http://www.wabsa.com.au/index.php/about-us>

Also the **Country Women's Association**—we all have enjoyed a cup of tea and scones while attending the Royal show.

"The South Australian Country Women's Association has been serving the community since 1929. We are not for profit, non party political and non sectarian. The organisation is made up of volunteers who work to promote the welfare and conditions of life for women and children, of all ages, whether in the city or country.

Our slogan is 'Sharing and Caring with Action'. Sharing involves service and the giving of time, talents, efforts and finance. What is given in service is the road to what is gained personally. Caring involves friendship, tolerance and understanding of others.

The provision of welfare is important to us and by working together much can be achieved. Social issues need constant monitoring and lobbying at local, state and federal levels. We also believe that education is continuous, heritage skills and history are worth preserving and leisure activities enhance the quality of life."

<https://sacwa.org.au/about/>

When purchasing a packet of *Laucke Scone Mix* you are supporting the CWA – a portion of each sale is forwarded to assist the association. (Recipes available on the website).

We always remember the many courageous women who helped with quiet determination to support their families and communities.

May is also the month for "National Reconciliation Week" – National Reconciliation Week (NRW) has been held in Australia every year between 27 May and 3 June since 1996. It provides the opportunity for all Australians to reflect on the relationship between Aboriginal and Torres Strait Islander people and other Australians.

I thank the many people who help to make our meetings and activities successful. It is truly a great effort by all. A busy time with the Biennial Seminar in August and two Family Tree Maker workshops with Michael Smith are exciting. Also August is National Family History Month with activities to attend.

We look forward to interesting times in The Fleurieu Peninsula Family History Group.

Joy Nieass

MILANG LAKESIDE BUTTER FACTORY by Christine Keen



As part of History Month, I took the opportunity to visit Milang, and attend a few history events in the town. One of these events, was a historical tour of the town, which included a visit to the *Milang Lakeside Butter Factory*.

The *Lakeside Butter Factory* was first opened in 1893 by Messrs Buckland and Lipson. Cream to make the butter was brought from Meningie twice a

week via boat. Despite the construction of the railway, the Butter Factory thrived, and was even approached with enquiries of exporting its product direct to Germany and to Hull in Yorkshire. The Factory closed for the first time in 1904.

The building was purchased in 1905 by Mr Paschke, who secured support from local dairy farmers and the Butter Factory was again operational. During the following year the factory was upgraded to include a "Linde refrigerator" to cope with the increasing milk supplies.

In 1914 the Factory was purchased by Mr Murphy Fromen and Co. Ltd and became the *Milang Lakeside Butter Factory* when it reopened in 1915. In 1919, the Farmers' Union, having become one of the largest business establishments in South Australia, purchased the Lakeside Butter Factory. In 1941 it was proposed that the Butter Factory also produce cheese.

The original stone building was constructed with a domed roof and is unique to the area. Expansions were made to the building in 1915 and again in 1920 with the inclusion of corrugated iron outbuildings. A manager's cottage is also located alongside the building.

The factory building is listed on the State's Heritage Register, and after a public meeting in 2014, the people of Milang have decided that something needed to be done to save this iconic building and restore it.

On 29 July 2016, the Milang and District Community Association (MADCA) purchased the building and manager's cottage with funds that they had raised and a grant of \$325,000 received from the Alexandrina Council. An engineer's report commissioned by Alexandrina Council advised that there are some structural repairs that will need to be undertaken in the first instance.

A Heritage Architect has been engaged and is helping to develop ideas that will assist with MADCA's aim of ensuring that the building remains a sustainable community asset long into the future.

MADCA now need to raise \$500,000 over a five year period to enable restoration of the buildings. Financial donations are welcome. More information can be found about upcoming fundraising activities, and restoration progress at <http://www.madca.org.au/milangbutterfactory/> or the *Milang Lakeside Butter Factory* Facebook page.

Christine Keen

Historical information taken from *Mates Make the Difference* leaflet, Milang and District Community Association, 2017.

MEMORIES by Ann van der Linden

I am wandering through the years of our magazines. I wasn't a foundation member but joined in 1998, so my wandering starts at 1999. I hope to find some articles or information which would be a help to current members.

This family history group was started by the late Tim Wing, a retired Librarian who had been doing part of his family history and felt there should be a group in this area. Some of the foundation members are still with us. In 1999 The FPFHG became known on the web through a website created by Mark Lang.

I put the name Behrtel on it and had a fantastic result. I had emails from South America, South Africa and the Netherlands. The family in the Netherlands wrote, we are from a very small family. I wrote back to them and informed them they were from a very large family, the origin supposed to be in Estonia. I say supposed because my great-grandfather was a son of seafaring people, was illiterate and spoke only Russian. He escaped from the Russian rule. He settled in Rotterdam as a sailmaker. The name Behrtel or Berthel was unknown in Estonia. The people from the Netherlands went for a holiday to Estonia but hadn't been able to find the name in different archives.

In 1999 a workshop was held by Graham Jaunay, a retired professional genealogist and record agent. Here are some books Graham said were useful for knowing the origin of your surnames.

CW Bardsley : *Dictionary of English and Welsh surnames*

PH Feaney: *Dictionary of British Surnames*

P Hanks and F Hodges: *Dictionary of Surnames*

Oxford Dictionary of Surnames

In January 2001 David Boyce, my guru, started the computer groups which have been a great success and are still going.

In May 2001 Graham Jaunay again gave an interesting talk, this time about tracing your Irish Ancestors. The most useful book he recommended is *Irish Records* by James Ryan. This book is available at the Noarlunga Library. He also had a few books and CDs available. Graham has donated some of his collection to our own library.

In September 2001 Mark Lang, the then webmaster, who had a degree in computer science, was made an Honorary Member of the FPFHG. Mark Lang where are you?

In those first years Graham Jaunay was often the guest speaker and wrote many articles in our journal. Most articles were written by Tim Wing, Mark Lang, Graham Jaunay and David Boyce.

David Boyce—I call him 'my guru', but at our meetings he is called the one minute man, ha-ha.

Ann van der Linden

COMING TO GRIPS WITH MY DNA by Graham Jaunay

This the final instalment of Graham's DNA article.

In an effort to expand the number of matches I had with *Family Tree DNA* (FTDNA) subscribers, I also transferred my raw data to *GEDmatch*. *GEDmatch* is a free to use volunteer website that allows you to upload your *atDNA* data.

Using this third party website I was hopeful that potential matches who used *Ancestry DNA*, and *23andMe* would have uploaded their results. My thinking was that if they went this extra step they just may be more knowledgeable about their ancestry and more inclined to respond to me, the response by FTDNA subscribers being, as I had been advised, relatively poor!

Before progressing I need to clarify what I decided constituted a match and for this I relied on the data provided by *The Genetic Genealogist* to compare two people...

Q1: *Is there at least one 9cM segment?* Yes: It is a match. No: go to next question...

Q2: *Is the total shared DNA greater than 20cM?* Yes: Go to question 3. No: Not a match.

Q3: *Is there at least one 7.69cM segment?* Yes: It is a match. No: Not a match.

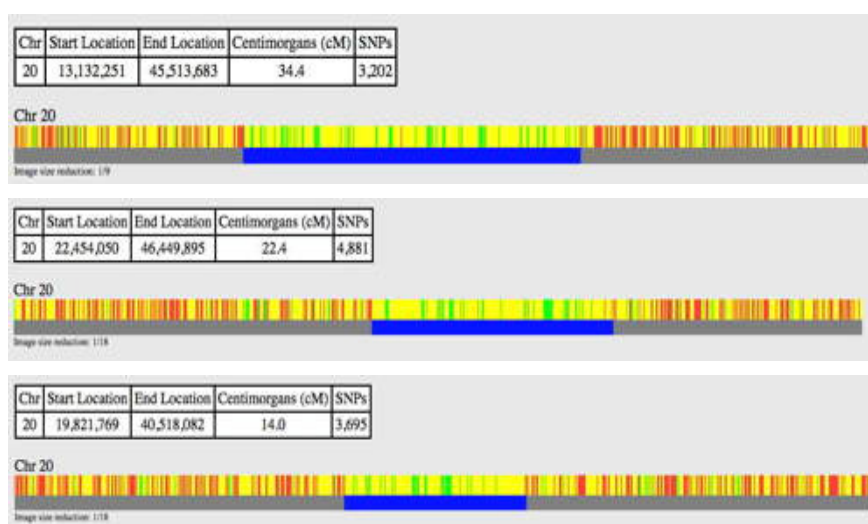
If the shared segment is more than 30cM, the likelihood of a shared ancestor within 6 generations is 90%, 20-30cM - 50%, 12-20cM - 20%, 7.5-12cM - 5%.

Joining *GEDmatch* is an easy exercise. On uploading your *atDNA* material you may have to wait some days for a result! In my case it was about 24 hours. The site will provide you with a password which you can change. They will also allocate you a new Kit Number which you cannot change. The Kit Numbers are prefixed with a letter telling subscribers the company that originally undertook your testing: A = *Ancestry*, T = *Family Tree DNA* and M = *23 andMe*.

GEDmatch allows people to use an alias that I find a trifle annoying when sending emails and scrolling through lists looking for matching surnames. It seems rather strange to not disclose your name on a site that holds your DNA profile when seeking your ancestry! Also the site requires you to answer two questions where the answer *no* would rather defeat the whole purpose of the exercise. The first of these gives consent to make your data public and the second seeks permission to publicise your contact email. The system will not work if you say no to either

question! Clearly if you want to protect your email address then use one from *gmail* or like organisation.

A word of caution before we go any further. When you work with *GEDmatch* it is important to read the guides. One of the better third party ones is by [Jarad Smith](#). I was initially caught out by not reading such material and made a simple mistake that caused me issues until I read the manual. If you undertake a '*One-to-many*' *Matches*' you need to remind yourself that the blue bars you see in the graphics are matches to you alone and not between the *many*! To find out if individuals within the group are related to each other you need to undertake a '*One-to-one Compare*'. Thus in the following graphic those shown with dark underlinings listed are related to me but while the first two are related to each other, the third is not. It is just a coincidence that the blue segments in the graphics overlap!



The first thing I noted was that a second cousin on my father's line had tested with *23andMe* and posted to *GEDmatch*. He of course heads up my matches far clear of the second listing. His listing may prove useful in distinguishing some of my great-grandfathers' ancestors. Having considered this I have since arranged to test my 96-year-old mother – her results should also help sort out paternal and maternal relationships within the matches. I will keep you posted on the outcome next year.

X-DNA					
Longest cM	Gen	Details	Total cM	largest cM	
▼ ▲	▼ ▲		▼	▼	▼ ▲
97.3	2.8	X	0	0	Graham Jaunay graham@jaunay.com
41.4	4.2	X	0	0	Emily Williams [REDACTED]

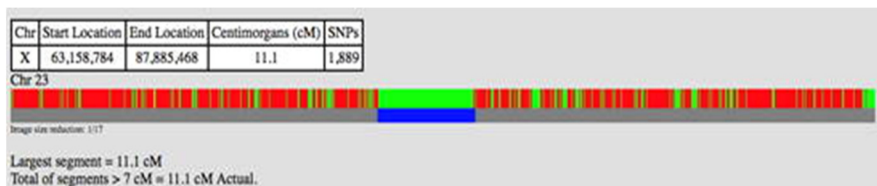
Haplogroup					Autoso.	
Kit Nbr	Type	List	Select	Sex	Mt	Y
▼ ▲					▼ ▲	▼ ▲
T251762	F2	L	<input type="checkbox"/>	M		
A982265	F2	L	<input type="checkbox"/>	F		

The top two matches to my second cousin are shown shaded on cell T251762, and the two L and A letters in the table above.

Some of the interesting features of the database are readily apparent. Working from left to right the Kit Nbr is your assigned number and the prefix indicates the testing company. The colour green appears on new postings and gradually fades to white so that you can pick up new matches down the track. The column headed Type indicates the type of test taken—F1 & F2 = *FTDNA*; F1N = *National Geographic*; V2 & V3 = *23and Me*; while C files are combinations of these tests. The column headed List allows you to select that person's listing—a powerful tool to tighten up matching options. The column headed Details under Autosomal facilitates a one to one comparison on Chromosomes 1 to 22 where the green indicates a full matching base pair and yellow a half match. Blue is the longest matching segment. Other colours are used to represent other lesser matches with red being a no match.

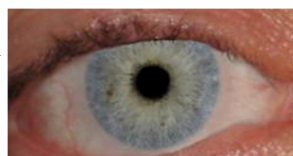
Editor's Note: Information listed here was removed due to space restrictions. For the full details refer to the full edition of *Proformat News*, No 129, November 2016.

The column headed Details under X-DNA facilitates a one to one comparison on Chromosome 23. Pictured is Graham Jaunay's Chromosome 23 matched against Tom T.



Incidentally in this example the longest match with Tom T is on the X chromosome – what does that mean?

Gedmatch has a number of other features apart from matching and one to one comparisons. One I found intriguing was the eye colour prediction – I received a perfect result!



The top matches in *GEDmatch* revealed the importance of using this site. Just two listed on *FTDNA* appeared on my top 30 matches and the top X chromosome match, although tested with *FTDNA*, did not appear on *FTDNA* at all!

X chromosome matches

An X-DNA test looks at markers on your X chromosome(s). Males have one X chromosome that they inherit exclusively from their mother. It seems to me that this field has been largely overlooked if material on the web is any indication and yet, if my thinking is correct, a male finding a person with a significant X chromosome match could prove helpful as there are limited ancestors given that this chromosome passes down the female line. It is a little murky because fathers have an X chromosome too and while they pass their share to their daughters, their daughters only pass one to their sons! Therefore on my mother's line we reduce the potential number significantly!

There is an important caveat that is not helpful – although males pass the X chromosome largely unchanged to their daughters, females will usually pass a mixed X chromosome to their child – a mixture of the X chromosome they received from their father and mother. However, a child is unlikely to receive an X chromosome from their mother that is 50% from their maternal grandfather and 50% from their maternal grandmother – it will most likely be a random amount between 0% and 100%. Thus, an ancestor can be under- or over-represented in an actual chromosome.

Editor's Note: Information listed here was removed due to space restrictions. For the full details refer to the full edition of *Proformat News*, No 129, November 2016.

Generally I experienced the same poor response level with *FTDNA*, although those that did respond seemed far more interested. Again whilst I shared my pedigree with them and have a full tree on site, none shared a pedigree with me allowing me to undertake a closer search and most had not posted a GEDCOM

either! This has to be my greatest issue with the process and overwhelmingly frustrating to think one is potentially so close but the other parties lack the enthusiasm!

Being proactive I have been trying to determine matches myself by analysing where matches are occurring in an effort to determine from where in my ancestral lines these matches may have emerged. This is a lengthy slow process on a par with chasing up paper records and the like and to date has not progressed my family knowledge.

Case 1: The respondent indicated a match with the name HUDSON in my maternal line – a 3g-grandmother from Bristol. However, HUDSONs in my family are also a remote family on my paternal line – an 8g-grandfather's daughter married a HUDSON. I know this because my grandfather's sister's grandson (2C) also has HUDSON matches. *GEDmatch* suggests the common ancestor is 6.4 generations back. My family lived in North Yorkshire and so did respondent's HUDSONs.

Case 2: My second cousin and I have a significant match on chromosome 20 that also is a good match for 'S' and 'K'. Our most recent ancestor with these two is estimated to be 4.4 generations. Therefore the match is on my paternal line somewhere and I can narrow it down even further in that my second cousin and I share JAUNAY and CAWLEY ancestry. Since 4 generations ago the JAUNAYs were French it seems to me that the most likely matches will be found somewhere on my CAWLEY line.

Case 3: 10 people testing with *FTDNA* share the same long segment with me and my second cousin. This needs to be pursued by undertaking 'One-to-one Compare' with each of them to determine if they do indeed share our JAUNAY/CAWLEY origin.

Findings

1. Very few testing with *Family Tree DNA* place their results on *GEDmatch*.
2. Little chance of listed matches replying to enquiry emails although those aware of *GEDmatch* appear to be more likely to respond.
3. Those that reply to emails are doing so out of courtesy as they rarely supply or seek information.
4. Supplying significant information in an enquiry email does not lead to reciprocation.
5. Testing companies should consider ways of providing subscribers with information on how the matches are linked.
6. While the use of aliases by people in DNA projects is understood, it is not

helpful when researching matches.

7. Contributors to DNA projects who have not undertaken prior extensive family history research, of not only their ancestry but all their ancestors' descendants, are unlikely to be helpful in determining matches.

Conclusion

Tests for atDNA will reveal many matches with no indication of linkages and at this stage there may be very little chance of progressing family history research unless the match is a close one and/or the match is a family history enthusiast.

I remain sceptical at this time but intend to continue approaching matches down the lists and start contacting X-DNA matches. I will also undertake a similar quest with my wife's matches. I will keep readers informed. In the meantime I would be interested to hear of your experiences.

In the meantime if you are considering embarking on the DNA quest as a quick answer to those barriers in your family history – think again. If the subject of your search is a rarer surname line or from outside of the UK and USA then the chances of matches dwindle significantly!

Graham Jaunay

(Reproduced with permission from *Proformat News*, No 129, November 2016)

ADVANCE REMINDER -MEMBERSHIP FEES

Members are reminded that the financial year ends on 31 October. Members must be financial before the AGM, Saturday, 18 November. Non-financial members may not vote, nominate or stand for committee positions.

Please ensure your membership subscription is paid before the AGM.

Reminder: There is a \$5.00 rejoining fee payable for any membership not paid by 28 February.

Watch your email or letterbox for renewal membership forms being sent out in SEPTEMBER.

INTRODUCING TINA JENKINS by Kerry Edwards

I can at last reveal a long held secret; my second cousin Tina.



Tina was born Laraine Gurney at the Queen Victoria Hospital (now demolished) in Melbourne on 12 October 1952 to Wanda Shirley Gurney from Millicent. As was the custom of that time, Wanda travelled across the South Australian border to Victoria for her pregnancy to be kept secret and to give birth, possibly staying with a divorced Aunty. On 23rd of the same month Wanda put her baby up for adoption, which was facilitated by Margaret Radford (Sister Julian CHN) from the Church of England Diocesan Mission at 265 Spring Street. On 7 April 1953 Laraine's adoption by William Henry and Lesley Elaine Jones, proprietors of The Union Hotel at 41-43 Victoria Street in Nhill, Victoria was formalised and she was christened Christine Lesley Jones (known as Tina).

Wanda had married Peter Reilly, a widower with a daughter, on 10 April 1954 in Millicent and in the following years they had 5 children. Wanda's mother was Eliza Caroline Edwards. My father is John James Edwards, his father was Ernest Clarence Edwards. Ernest and Eliza were siblings which makes my dad John and Wanda first cousins and Tina and me second cousins.



William and Lesley spent their lives running pubs in various locations though out country Victoria and after 16 years returned to their roots in Bendigo and took over The City Family Hotel in the heart of Bendigo near the Alexandra fountain.

At 19 years old on 1 January 1972 Tina married Ian Lloyd Jenkins at the St Paul's Church of England, in Bendigo, moving to live in a house for the first time.

While Tina was pregnant with their only child, a daughter Penny in 1984/85, the adoption laws were being challenged and eventually changed in December 1988. In September 1987 an article in the local paper gave an address to apply for information from Community Services Victoria. Tina immediately wrote for her records but the reply took some years because of the flood of requests they received. In May 1988 she received a letter saying they're processing an average of 100 cas-

es each month and apologised for the delay in actioning her request. Soon after she received a copy of her entire adoption file, which was the process at that time. Today applicants receive a selected few documents.



In June 1988 Tina wrote to Wanda to introduce herself but received no reply. She wrote a few more times over the years without a response so in February 2002 she asked for help from Centacare Catholic Family Services who wrote to Wanda on 15 April 2002. Wanda wrote back on 20 April 2002 confirming that she was the person Tina was seeking, no

one knew of the adoption and she wanted it to remain that way so she didn't want to make contact.

Tina travelled to Melbourne to read the letter from Wanda and on her return home searched the internet and found my family history website. That pieced together a lot of what she wanted to know and she was excited to belong to a family somewhere.

In 2003 Tina contacted the Millicent family history group with a query on the Gurney family in regards to an article of interest listed. Wanda's sister Betty Dunn (nee Gurney) received the query. Betty spoke to Wanda.

On 17 June 2003 Wanda rang Tina and they spoke for over half an hour. Over the years Wanda had received Tina's letters but was never convinced they were from the daughter she'd given up for adoption. Wanda had struggled with giving up her baby and spoke to her mother. Some weeks after they spoke about the adoption her mother told her that the baby had died. Wanda told Tina that until she had received the letter from Centrecare this is what she had believed to be true for all those years and wasn't sure what to believe when she had received letters from Tina in the past. Wanda and Tina agreed at that point "it" best remain a secret.



Tina continued to send letters to Wanda. Wanda's husband Peter passed away in Millicent on 2 September 2008 and Tina thought maybe then Wanda would be able to contact her so in May 2009 her letter suggested they meet. However she never received any replies. Tina, her husband Ian and their daughter Penny have stayed in Millicent as Tina had an urge to sleep in the same town as her mother.

On 31 August 2009 Tina emailed me to say that for many years she has read my website with interest and would like to get in touch about a very sensitive matter. I rang her and she told me her story, which had to remain a secret. We emailed and spoke to arrange to meet. Tina and her husband Ian drove to Adelaide and we met at my mother Marcelle's house. My mother and I gave Tina family information and copies of photos. Tina gave me a folder of information to hold for her with the promise of passing this onto her half-siblings, should something happen to her, so they would know she existed.



On 8 January 2010 I visited Wanda at Millicent and took her photo with her sister Phyllis. This photo was the first Tina had ever seen of her mother. Looking at Wanda's face for the first time is a moment Tina says "she will never forget".

In October 2010 my father John (Tina's first cousin once removed) and I drove to Drysdale Victoria and stayed with Tina and Ian for a weekend. I went armed with more family information; charts and a family history book my mother and I published in 2007, which Tina now calls 'the book' and says she read it so much she had almost worn the print off.

Wanda and I exchanged Christmas cards and letters over the years as we were both interested in each other's family news.

Wanda passed away on 13 April 2013 in Millicent and I rang Tina to break the news. They had never met.



In July 2016 Tina decided it was time to contact her siblings David, Deidre, Philip and Vicki (Joanna passed away shortly after her birth) but she wasn't sure how to gently go about it.

My father John offered to visit his cousin Betty (Wanda's sister) last August and Tina was very grateful for the offer. Tina had sent John copies of her adoption (as confirmation) and a letter for Betty to read hoping for a response. Betty wrote a letter of reply thanking her for the information but she couldn't keep in touch.

Tina said if one door closes, another door opens and sent me a letter to proof read addressed to all her siblings care of David Reilly (Peter and Wanda's eldest son

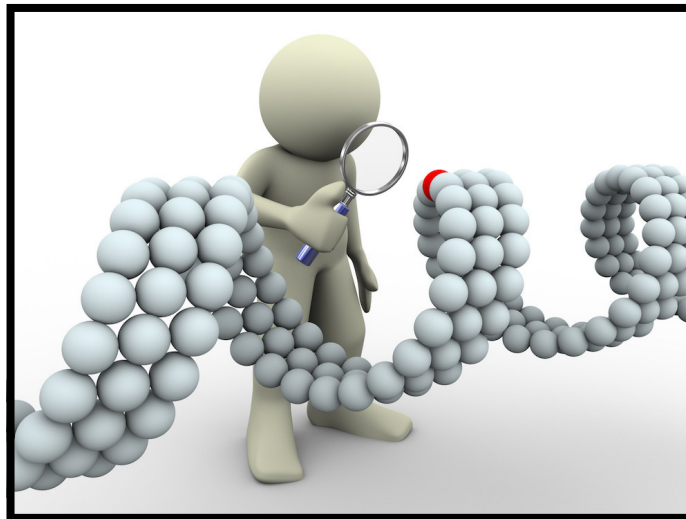
as this was the only sibling she had an address for as he has a business in Millicent). Tina sent the letter in October 2016 and soon after heard from David and his wife Kay. They'd known nothing of her birth and welcomed her into the family.



Christmas came early for Tina December 2016 when her brother David, his wife Kay and their niece Joanna (Phillip's daughter) met at Tina's home, stayed the weekend and talked non-stop. Two weeks later her sisters Vicki and Deidre met and stayed with Tina bringing with them an album with family photos, and a history of the Gurney Family to which her birth mother Wanda and Aunt contributed photos of ancestors and descendants. In April Tina met the remaining sibling Phillip.

Now that Tina's siblings know about her, I can at last tell her story.

Kerry Edwards



Source: www.yourdnadiva.com

LOOK WHAT YOU MISSED!!!! by Elizabeth Grocke



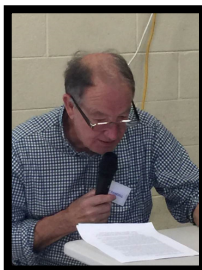
April 2017 *Joanna Day, State Library – World War I Red Cross Letters* – What a great presentation for the Centenary of ANZAC from the State Library. What you will find will amaze you. Google SARCIB for great reading – there is more history to explore even if you had no family involved, or you think you have

done it all, just go to the site. I found it very 'peaceful' and I wonder at their experiences.

Joanna also shared with us two local boy's journey namely, Reg Christie and Jack Antonio.



May 2017 *Mark Randell, Flour Mills in South Australia –*



Again another eye catching presentation on the Flour Mills in South Australia. If you watch 'Escape to the Country' or possibly 'Grand Designs' you may have seen these restored in the owners' new homes, but to be told these were also transported to Australia, that would be a task (the ship didn't sink) and then to reassemble them here and to work with them, the mind boggles.

June 2017 *David Wilson, Kangaroo Island Pioneers Association –*

Questions were asked, but did you get the right answer? (I know I must have been away when this was taught at school, but over a dinner discussion, when I went to school back in the 1960s it was all about the convicts and Botany Bay). Anyway the questions and the right answers started an excellent history lesson. David shared with us how he started mapping the history of the 1st eight ships to Kangaroo Island and its passengers and how he has ½ a Ph.



Another website to visit is Kangaroo Island Pioneers Association – good history lesson.

Elizabeth Grocke

A QUIZZICAL QUEST

1. The present Royal Adelaide Hospital opened in what year?
2. What is the third planet from the Sun?
3. In what year did the Adelaide Crows first play in the AFL?
4. Lemurs are native to which island country?
5. HMAS *Sydney* was sunk in which year of WW2?
6. Sir John Downer held what office in South Australia?
7. Peter Handcock was shot for war crimes in 1902. Who else was shot?
8. In area, which is the biggest state in the USA?
9. Hong Kong became independent from the UK in which year?
10. The French Revolution started and finished in which years?

The Tea Tree Gullyian, Vol 16, No 7. Reproduced with permission of President/ Editor Carole Simmonds. Quiz submitted to the aforementioned publication by Mike Talbot. Quiz submitted to *Relative Thoughts* by Elizabeth Grocke.

How did you go – answers on page 25.

WELCOME TO NEW MEMBERS

The Group welcomes the following new member:

Margaret Tickle.

Nola Clisby

WORK BOOKS

Ancestor Work Book - \$15



The Ancestor Work Book is ideal to record your ancestor family tree in book form.

The Ancestor Work Book is designed to assist the researcher record their family tree and is great for those research trips or as a gift to a family member.

The book includes Paternal and Maternal Ancestor Charts (5 generations). Family group and notes sheets are allotted for each couple through to great-great-grandparents. Pages are in A4 size providing plenty of room to record information.

Genealogical Work Book - \$10

This work book is designed for you to take with you on those research trips.

The Genealogical Work Book has 20 family group sheets, 20 pages to record notes, sources and other information. The book contains an index page so you can find the right page quickly. Pages are in A4 size providing plenty of room to record information



Books available at Fleurieu Peninsula Family History Group monthly meetings or resource room open times.

Also available - Anne Trubshaw-Dow or Lynn Dillon email:
fleurpengroupinc@yahoo.com.au



Source: *Among My Branches* – *WordPress.com*

Fleurieu Peninsula Family History Group Inc

2017 **Seminar**
A Mixed Bag

Date: Saturday 19th August 2017
Venue: Uniting Church Hall
William Road, Christies Beach
Time: 9.30am-4pm
Registration: 9am-9.15am

Cost: Full Day Single \$30/Couple \$50

Non members Single \$35/Couple \$60

Includes Morning & Afternoon Tea and Lunch

½day Session \$20 includes lunch

Speakers

Lyndal Simmonds - Mapping your Family History Story

Dr Ray Tobler - Australian Centre of Ancient DNA (tba)

Jonathon Russack - Spirit of Adoption

Fred Trueman - Freemason History

Information Tables

Enquiries

Elizabeth 8386 1182 or 0421 102 868

Joy 8536 4914 or 0434 466 182

UPCOMING SPEAKERS & EVENTS



All meetings are 1:15pm, Uniting Church Hall, 23 William Road, Christies Beach. If you have a suggestion for a suitable speaker, please contact Elizabeth Grocke with details .

15 July – West Torrens History Group, general history of the area

19 August – No meeting – Biennial Seminar

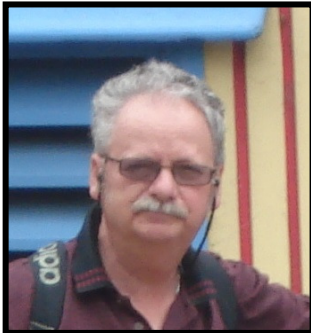
16 September – Gumeracha History Group, history of the area

21 October – Magarey Family, Early Pioneering Days in SA

18 November – AGM and Christmas Lunch

Please contact Elizabeth with any suggestions for speakers.

RESOURCE ROOM OPENING TIMES



The Resource Room is available to members for research. During the opening time before the Saturday meeting the resource room volunteers will not be available to give assistance with 'Family Research', but books, newsletters and magazines can be borrowed from 12 to 1.15 pm and during the afternoon tea break.

Other opening times for the Resource Room will be the 1st and 3rd Wednesday afternoons only from 1.00–3.30pm.

Members wishing to access *findmypast* during resource room openings, are now requested to contact Chris Grivell and book a specific computer time. Chris's contact details may be found at the front of the journal.

Opening dates for this quarter are: 5 July, 15 July, 19 July, 2 August, 16 August, 6 September, 16 September, 20 September, 4 October, 15 October, 18 October.

Note: The Resource Room WILL NOT be open on Saturday 19 August due to the Seminar.

A QUIZZICAL QUEST – Answers

1. 1939 (the 1st Hospital founded in Adelaide was in 1849).
2. Earth. 3. 1991. 4. Madagascar. 5. 1941.
6. Twice Premier of South Australia (Alexander Downer's Grandfather).
7. Breaker Morant. 8. Alaska 663, 268 sq miles.
9. 1997. 10. 1789 – 1799.

EVENING COMPUTER GROUP



The evening computer class is held in the Uniting Church Hall Christies Beach. A gold coin donation is requested to help cover the cost of the hire of the hall.

The Group meet monthly on the second Monday night of the month at 7.30 pm.

The program consists of a presentation on a specific topic followed by a question and answer session. Bring a tagged laptop from home but if you cannot you will be seated with someone who has a similar operating system to you.

Contact David Boyce if you are interested.

Southern Areas Computer Scene

35 Taunton Parade, Christies Beach
Phone (08) 8382 2285

New & Second hand computers & laptops
Printers, Ink & Selected printing requisites
Parts and accessories
Repairs are a specialty
On-site internet access
Internet service package agents

For all your computing needs



BOOKS FOR SALE – PIONEERS AND SETTLERS BOUND FOR SOUTH AUSTRALIA EMIGRATION TO SOUTH AUSTRALIA

by Di Cummings published by Fleurieu Peninsula Family History Group Inc.

Book 1	1836	\$25.50	9 ships	717 passengers
Book 2	1837	\$29.50	27 ships	1232 passengers
Book 3	1838	\$39.50	73 ships	2662 passengers
Book 4	1839	\$55	250 ships	5150 passengers
Book 5	1840	\$50	269 ships	4006 passengers just released

All books contain an index of passengers and ships.

The books contain details of passengers from different sources.

Sources: Ship Manifests & Embarkation documents, The Register of Free Passages to South Australia 1836 to 1840 (PRO London), *The South Australian Gazette and Colonial Register* (newspaper), *The South Australian Observer* (newspaper), *Hobart Courier* (newspaper)

Order on line, by phone or post to: Fleurieu Peninsula Family History Group Inc.
PO Box 1078 Christies Beach North SA 5165
Email: fleurpengroupinc@yahoo.com.au

allBIZ Supplies Pty Ltd

125 O'Sullivan Beach Road
Lonsdale SA 5160
Phone (08) 8326 2899
Fax (08) 8382 5532

Email print@allbizsupplies.biz

Website www.allbizsupplies.biz

For all your printing & publishing needs.



*We are pleased to acknowledge allBiz Supplies as the printers of our Journal
and can thoroughly recommend their excellent service.*

NOT JUST A HOLIDAY by Lynette Gibson

On our way north from Adelaide, my partner and I stopped at Tarlee for lunch just off the road, and not long afterwards a car and van pulled in coming from the north. Just happened to be a member of the FPFHG on their way home so I told her of the meeting that had just been held.

Next stop was to stay in the Riverton Caravan Park and our chatty New South Welshman neighbour told me that they had been on the road for 7 months and for family reasons were heading back to Victoria, as they wanted to get the medals for his late father-in-law who served in WW2. I asked him if he had searched the National Archives site for the service records. He knew nothing about it and within minutes his wife invited me into their van and I showed her how to find the service numbers etc and told them that as they weren't digitised they could apply for the records to be sent to them. Two happy campers!

From there we set off for Eyre Peninsula and stopped off at Kimba and next to our camp trailer a solo female in her campervan told us that she had come from NSW to find out more of her family who had settled in the area. She was getting help from the volunteers in the history room situated in the local outdoor museum. I told her about SAILIS (South Australian Integrated Land Information Services). I showed her how to access the records on her laptop. Next day Klaus and I went to the museum and the kind volunteer opened some of the buildings for us including a pioneer cottage that had been on her property, dismantled and then re erected at the museum. Also she opened the original one teacher school building and I remarked about the book compiled by Glen Woodward called *Teachers Stories*. He had previously given a talk at our Saturday meeting. She had not heard of the book so I promised that on getting home I would see if any of the stories related to that area. Back to the history room and after remarking on the amount of research and information in the museum and their room, the volunteer said she knew little of some of the land holders when Kimba started in the early 1900's. I wrote down how to access SAILIS. Another happy person.

On the road and after talking to a farmer north of Streaky Bay he allowed us to camp just 50m from the coast on his property. On the second night he and his wife came to see how we were, and naturally got chatting. Klaus asked them did they know the history of the farm to which they replied in the negative. Once again I said that SAILIS might help and I wrote down the steps to access land titles. Next

morning on leaving we stopped by the farm house to thank them for being so generous in letting us stay and the farmer remarked that he had old mates who lived down our way (Yankalilla) who used to come across to fish and stay with them but were getting too old to do so. One of them - Ray Clarke! He was the son of Private Sydney Norman Clarke whom I researched for the book *WW1 ANZACS of the Fleurieu peninsula. Stories from Pioneer Families!*

Just shows that you can't get away from family history.

Lynette Gibson

FAMILY HISTORY BOOKS by Kerry Edwards

In April I picked up my family history books from the printer.

This was the result of many years of research by my mother Marcelle Edwards and me, in particular the last two years searching *Trove* and tying up records. In 2007 I compiled two books, based on the furthest descendant on each of my family lines until present generation, in two books because at that time we had too much for one book. So 10 years later it's not a surprise that at 11,154 relations plus many hundreds of *Trove* articles, that we had too much for two books.

This left the problem of how to lay out the book. I use *Family Tree Maker* and for the 2007 books I used several reports and charts for the layout because an index wasn't available.

Family Tree Maker now has a plugin program (bought separately) that produces books with a table of contents, an easy to follow layout with charts and most importantly an index. An index is so important in any kind of reference book, particularly as it gets larger. So once I saw this program there was no turning back.

However I use a Mac and this program is only available for Windows. Luckily Heather Boyce had *Family Tree Maker* 2014.1 version and *Family Book Creator* on a spare laptop and she kindly lent it to me. I was able to import my data from my Mac to Windows via a free downloadable program available from *Ancestry* and I bought the latest *Family Tree Maker* program for Mac (Mac 3.1).

Next was learning how to use *Family Book Creator*. Michael Smith was invaluable and sent me his settings, worked out of a year of trial and error. I spent many

hours working through the various options and reading the user manual from cover to cover! Unfortunately there were some errors. Michael and I eventually worked out two of them but neither of us could work out why all the paragraphs for the notes weren't lining up. So I edited each book in Word, page by page before converting to PDF for the printer.

Family Book Creator has four options for books. I tried the traditional Descendants books to created 14 books (one for each family line). The cost of printing was \$20 per book for 100 books @ 14 books = \$28,000! So that was not an option. The other options are Alphabetical family register (all individuals in the data base in alphabetical order so too big again), Relatives of the starting individual (a kinship book with the selected number of generations) and Ancestors of the starting individual (the starting person and all ancestors directly back in time). The last two options both mean much smaller books and targeted for the reader so the best option. Only they mean creating a book per person! Individual books meant I couldn't get a traditional printer to add a cover, print a 100 or so for \$20 each and then give them out.

I took orders from family members first and to date have created 19 individual Ancestors of the starting individual books (to three degrees of relationship) and three Relatives of the starting individual books to be printed. I also created 14 Descendants of the starting individual books (the traditional books and one for each family line) to keep but not to print.

Another advantage is the books are created in PDF so can be kept electronically and emailed for the recipient to take to the printer (which saves postage).

I went to *OfficeWorks* for printing and putting into spiral binding. They charge between \$10 and \$40 depending on the size of the book and the number of colour pages (colour is 69c each and black/white is 10c).

If you're considering using *Family Book Creator* and would like to chat about it, please feel free to contact me.

Kerry Edwards

VOLUNTEER RESEARCH

Research can be undertaken for anyone seeking information on ancestors in our local area. Research Request Query Forms are downloadable from our website at www.fleurieufamilyhistory.org Please forward the forms to Volunteer Research, PO Box 1078, Christies Beach North, SA 5165.

Member **Julie Stokes** has offered to do research for members researching their family history in **New Zealand** as she has relocated there. She can be contacted on Email fleurpengroupinc@yahoo.com.au.

Julie lives in Wanganui, on the lower north island and welcomes visits from any members headed to New Zealand.

EDITOR'S NOTE by CHRISTINE KEEN



Did you all enjoy History Month in May, it's amazing how many events are on across our wonderful state. Personally, I managed to get to a few, but missed out on some of the events I particularly wanted to visit due to time constraints and sick children.

One of the most enjoyable for me was a visit to the SA Pioneers Association. Finding that one of my ancestors is indeed a pioneer was great, and both my daughter and I will be taking out membership with the Association. I hope you all managed to get to some of these wonderful events.

Don't forget to get your tickets for the Group's Seminar in August.

Please continue to send in your wonderful contributions, and feedback for the next edition. Don't forget to include your photos.

Christine Keen

When & Where

MEETINGS

The monthly Meetings are held on the 3rd Saturday of each month from January–October at 1:15pm, Uniting Church Hall, 23 William Road, Christies Beach. The Resource Room is open from 12:00 each meeting day.

Annual General Meeting is held on the 3rd Saturday in November commencing at 1:30pm. Committee elections are held at this time.

SPECIAL INTEREST GROUPS

Aussie Interest Group—meets at 1:00pm on the 2nd Saturday of each month. For information contact Ros Dunstall.

United Kingdom Interest Group—meets at 7.30pm on the 3rd Monday of each month. For information contact Sharon Green.

Apples and Androids—meets at 12.00noon prior to General meetings every month. For information contact Kerry Edwards.

Evening Computer Group—meets at 7.30pm on the 2nd Monday of each month. For information contact Dave Boyce.

DNA Evening Group—meets at 7.30pm on the 1st Tuesday of each month. For information contact Sharon Green.

DNA Day Group—meets at 1.30pm on the 1st Monday of each month. For information contact Peter Tuck or Sharon Green.

SUBSCRIPTIONS

Membership with Electronic Journal:

Family (2 people) —\$30.00

Single —\$25.00

Membership with Printed Journal:

Family (2 people) — \$35.00

Single—\$30.00

A \$5.00 joining fee applies to all new and lapsed memberships.

Fees should be paid to the Treasurer prior to the November AGM each year.

PUBLISHING This journal is issued quarterly to members. Items for inclusion should be submitted to the Editor by 16 March, June, September and December. FPFHG shall not be held responsible for statements made or opinions expressed by the authors of submitted materials, nor shall FPFHG vouch for the accuracy of any genealogical data, offers, services or goods that appear herein. The Editor reserves the right to edit any articles proffered for publication.

All graphics are public domain unless otherwise stated. Logo copyright © Fleurieu Peninsula Family History Group Inc 2011.

POSTAL DETAILS

POSTAL DETAILS

Return to **Fleurieu Peninsula Family History Group Inc.**, PO Box 1078, Christies Beach North, SA, 5165 if unclaimed.

Published Quarterly by Fleurieu Peninsula Family History Group Inc. Printing by allBIZ Printing, Lonsdale, SA